

DENSBE ELECTRICAL S'PORE PTE LTD

DL Tri Proof Light Specification sheet



Features

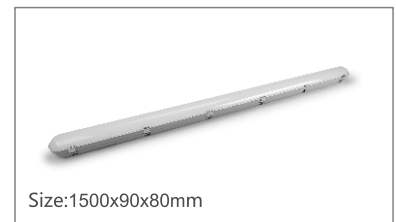
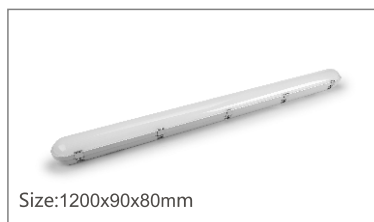
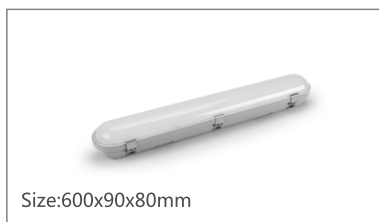
- PC Materials, Stainless steel clips
- Ra>80, LM80 standard, 120lm/w
- Ceiling installation
- Certification: CE ROHS
- IP66 waterproof
- Application: parking garages, school, cold storage, kitchens, and damp area.



RoHS



Dimension

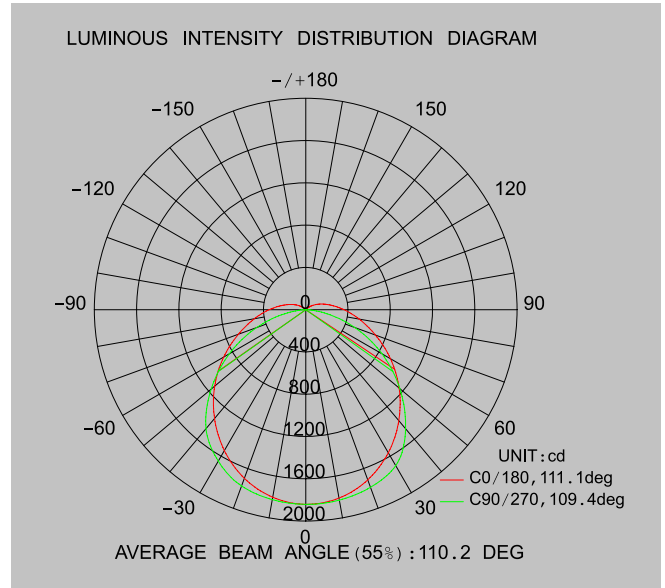
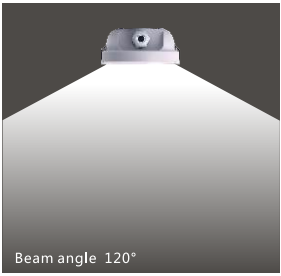


Ordering information

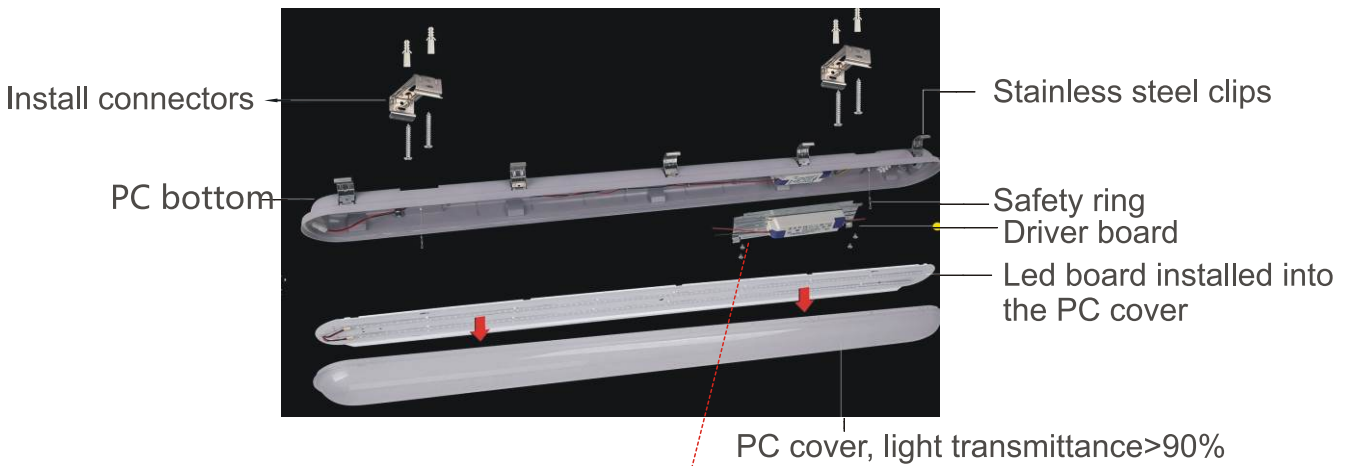
Model No.	Power	Lumen	Input Voltage	CRI	IP Grade	Dimensions(mm)
DL Tri-proof-20W	20W	2400lm	AC 200-240V	>80	IP66	600X90X80
DL Tri-proof-30W	30W	3600lm	AC 200-240V	>80	IP66	600X90X80
DL Tri-proof-40W	40W	4800lm	AC 200-240V	>80	IP66	1200X90X80
DL Tri-proof-50W	50W	6000lm	AC 200-240V	>80	IP66	1200X90X80
DL Tri-proof-55W	55W	6600lm	AC 200-240V	>80	IP66	1500X90X80
DL Tri-proof-60W	60W	7200lm	AC 200-240V	>80	IP66	1500X90X80

DENSBE ELECTRICAL S'PORE PTE LTD

Technical parameters



Structural details



Onekey set the Watt. of the drive



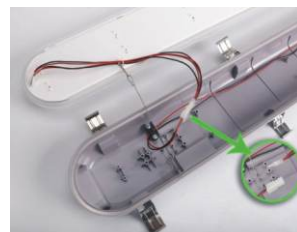
Onekey set the Emergency



Onekey set the Microwave Sensor



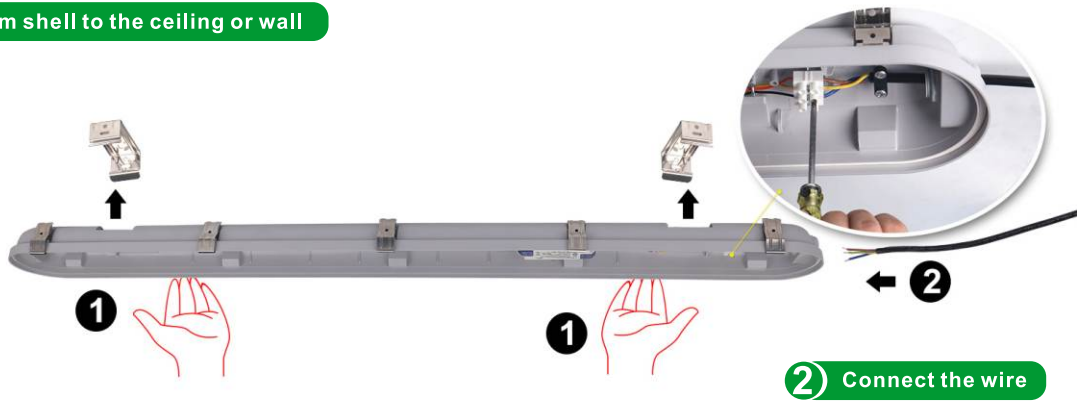
Led board was installed into the PC cover, avoid to touch by people or tools



DENSBE ELECTRICAL S'PORE PTE LTD

Easy Installation

1 Fix the bottom shell to the ceiling or wall



3 Fix the cover to the bottom shell



4 Close the cover and the clips!



Product application

