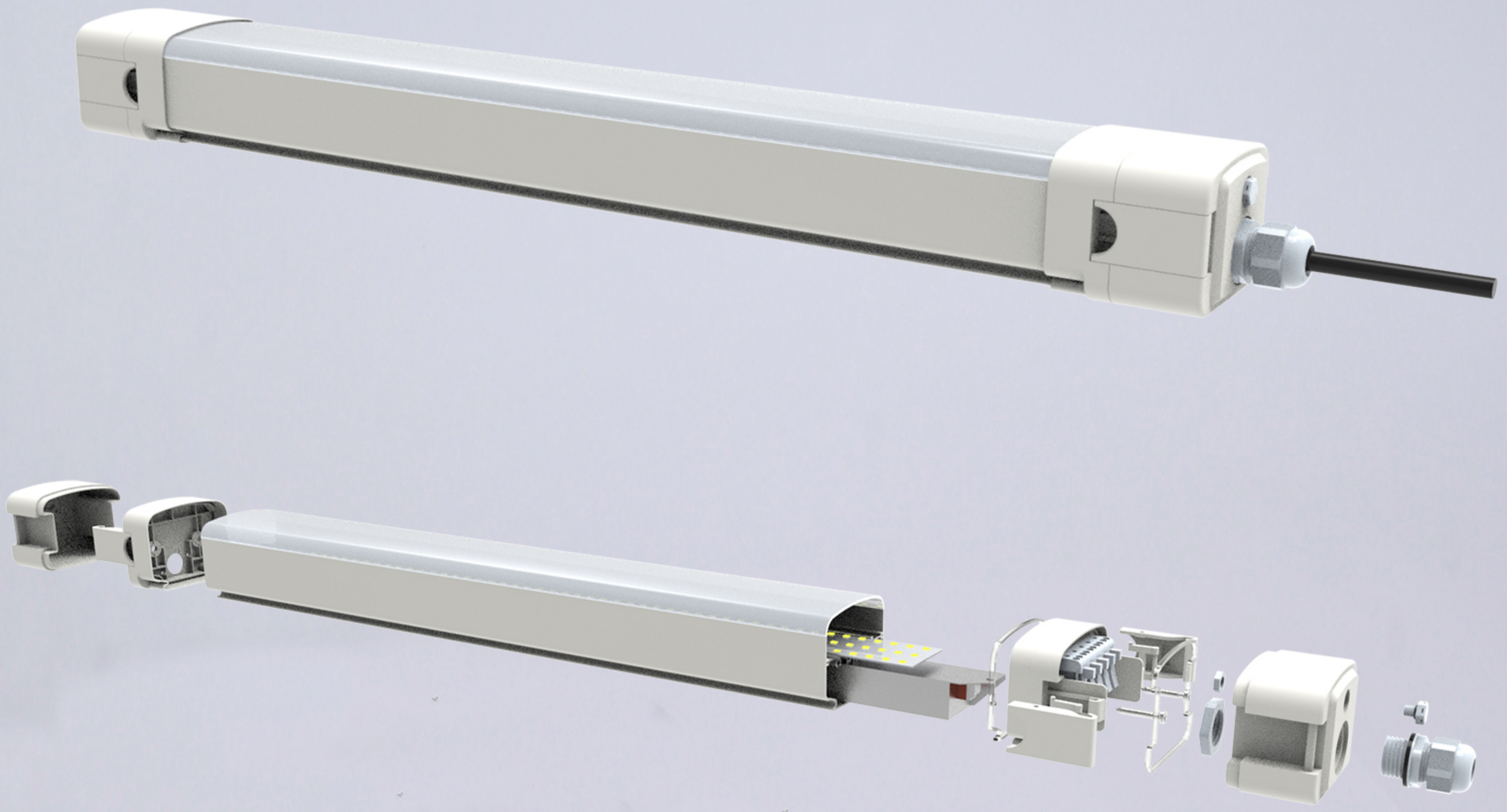


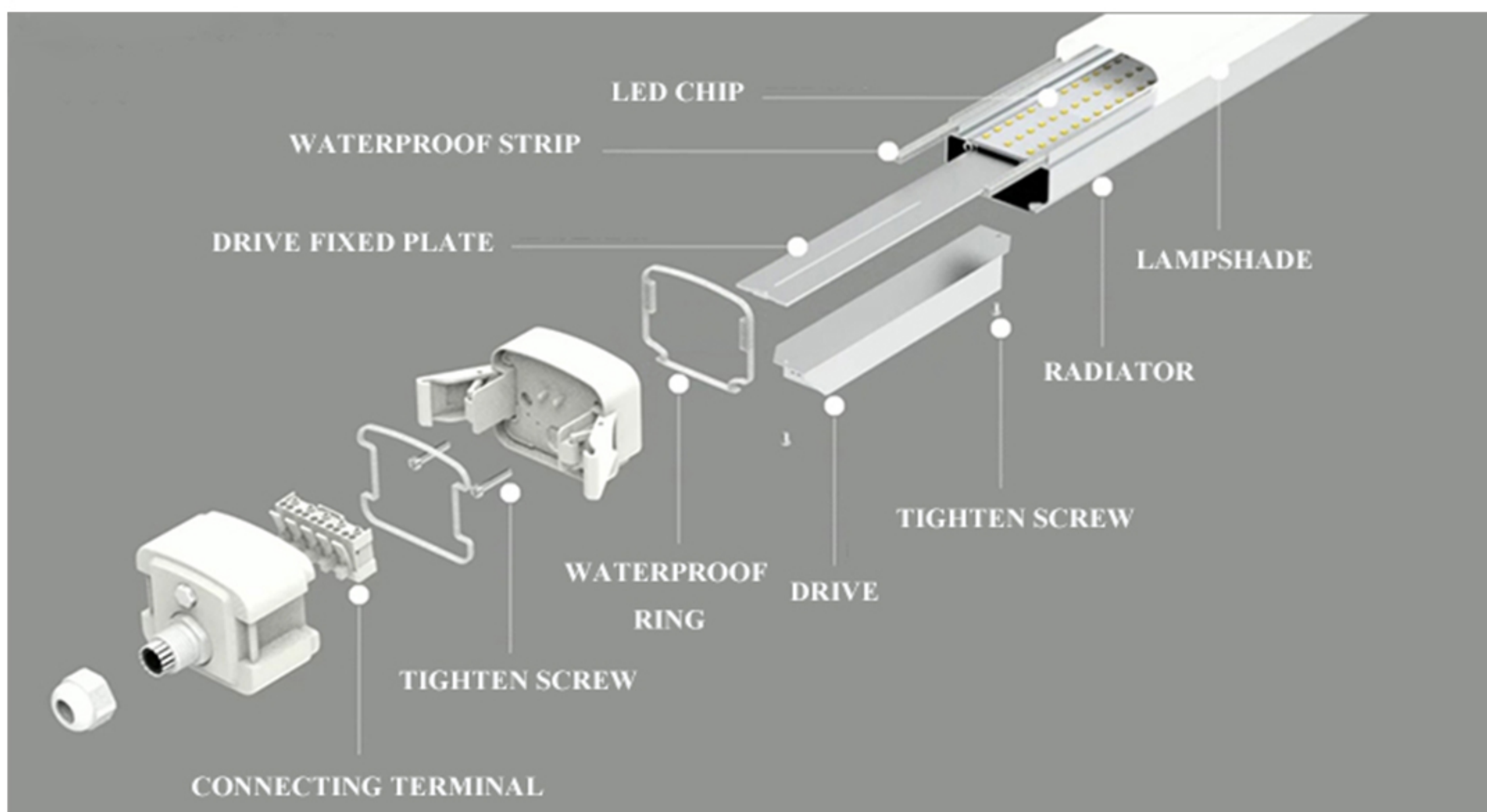
Triproof Lighting Fixture- AZ Series



Features

- ▶ Housing: ABS or PC, with good mechanical performance
- ▶ Body and diffuser meet IK08 and 850°C glow wire test requirement
- ▶ Clips: PC or Stainless Steel, ensuring IP65 of the lighting fixture
- ▶ Reflector: Painted Iron plate, easy installation and maintenance
- ▶ Cable Gland: ≥PG9, available for wiring input on one side of the housing
- ▶ Cover: PS or PC, with higher light transmittance

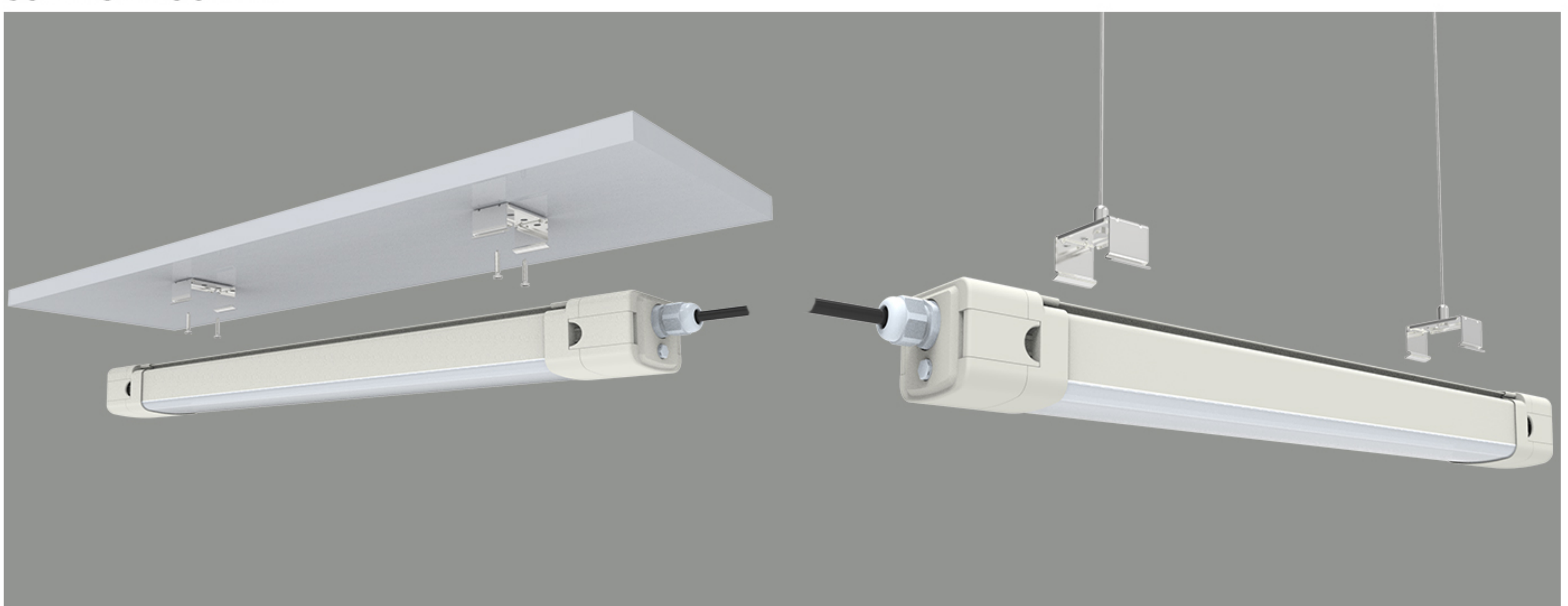
Product Description



INSTALLATION

SURFACE MOUNTED

HANGING ROPE INSTALLATION



Specification Sheet

Model No.	Watt(W)	IP Rating	Dim (L*W*H)	Weight (KG)
LLX-TriProof-AZ-600	20	IP65	600*73*61	3
LLX-TriProof-AZ-900	30	IP65	900*73*61	4.6
LLX-TriProof-AZ-1200	40-50	IP65	1200*73*61	4.6
LLX-TriProof-AZ-1500	50-60	IP65	1500*73*61	4.6

Triproof Lighting Fixture- AZ Series LED Waterproof Light



PACKAGING DATA



Model No.	Carton Dim (L*W*H)	Weight (KG)
LLX-TriProof-AZ-600	665*235*195	3
LLX-TriProof-AZ-900	965*235*195	4.6
LLX-TriProof-AZ-1200	1265*235*195	4.6
LLX-TriProof-AZ-1500	1565*235*195	4.6

Applications:

Can be used in some specific applications. Reliability and durability, High mechanical strength, Corrosion & Explosion resistant.

Salty, acid or arrosion applications like passageway, ship, harbor, underground parking or beach projects
Industry, garages, gas station & workshops.

